



# Education Network Solutions Product Guide for E-Rate

Reliable school networks made simple

**RUCKUS**  
COMMSCOPE

version .5

# Why choose RUCKUS for your school project?

As your school continues its digital transformation to 1:1 mobile learning, RUCKUS helps you address the top three challenges of school IT: network scaling, securing student data privacy, and network reliability for digital instruction.

## The digital classroom of tomorrow promises an outstanding education. Is your network ready?

The classroom of tomorrow promises an outstanding education. Blended learning, digital curriculum and other modern learning models can better engage students and help educators be more effective.

With this digital transformation, lesson plans now depend on consistent, reliable connectivity to the school's network. Instead of leaving tools locked in the classroom, students walk in the door with their laptops, tablets or other devices every morning, and take them home with them each night.

As such, there are three major concerns that school IT administrators are currently facing.

### NETWORK AND BROADBAND SCALING



**THE TOP PRIORITY FOR IT IS BROADBAND AND NETWORK CAPACITY.**

More devices are coming onto the network, stretching the limits of aging infrastructure. SETDA recommends 10Gbps per 1000 students by 2020-21. Plan for growth, not rip-and-replace.

### SECURITY AND STUDENT DATA PRIVACY



**FACING THE TASK OF PROTECTING STUDENT DATA FROM MISUSE OR BREACH.**

Buying or receiving 1:1 computers for digital learning will require schools to securely on-board devices for student data privacy.

### TRANSITION TO DIGITAL LEARNING



**THE TRANSITION FROM TEXT-BASED CURRICULA TO BLENDED LEARNING.**

Reliable connectivity is critical for classroom and distance learning. Cloud managed networks combined with network analytics can reduce digital downtime.

# Education Solutions for E-Rate

Expectations for your communications network have never been higher, as both students and teachers engage in new ways. To keep up with this demand, the communication infrastructure must be up to the task. That's where RUCKUS solutions can help your communications network do more—and do it better.

RUCKUS' communications infrastructure solutions are built to make your communications network simpler to deploy and manage, improve its reliability, and give it the adaptability to evolve as students and teachers' requirements change.

Our Education Network solutions portfolio for E-Rate covers every connection and cable, from copper and fiber structured cabling to the latest Wi-Fi 6 access points, high capacity switching and the best in control management using cloud or on-prem. CommScope is the only vendor who can fully support your entire communications network for your school, home, and community.

RUCKUS' portfolio of products will provide you with the most reliable networks made simple.

## FUTURE PROOF



Our ICX access switch uplinks can be upgraded without replacing the switch. We also support stacking up to 12 switches, while Campus Fabric supports up to 36 switches with a single point of management. Our flexible switch deployment options include standalone, stacking and Campus Fabric (with the same switches). With RUCKUS Cloud, you can easily add in RUCKUS Wi-Fi AP's and switches, or Internet of Things (IoT) infrastructure. For the latter two, simply plug into pre-existing RUCKUS Wi-Fi AP's – without having to rip and replace!

## WIRED AND WIRELESS NETWORK MANAGEMENT



With RUCKUS SmartZone Network Controllers, it is possible to manage both your wired and wireless network using a single network element. SmartZone network controllers simplify network set-up and management, enhance security, minimize troubleshooting and ease upgrades, and ensure provisioning consistency across networks built on RUCKUS access points and switches.

# Education Solutions for E-Rate

## Wireless Technology

Indoor and outdoor Wi-Fi (access points with Wi-Fi 6 that enables high device density, high-quality video, IoT sensors and cloud-managed control)

Mobile Hotspot (mobile-wireless access point is designed to leverage LTE networks as a backhaul and provide outdoor coverage)

## Fiber and Copper Cabling

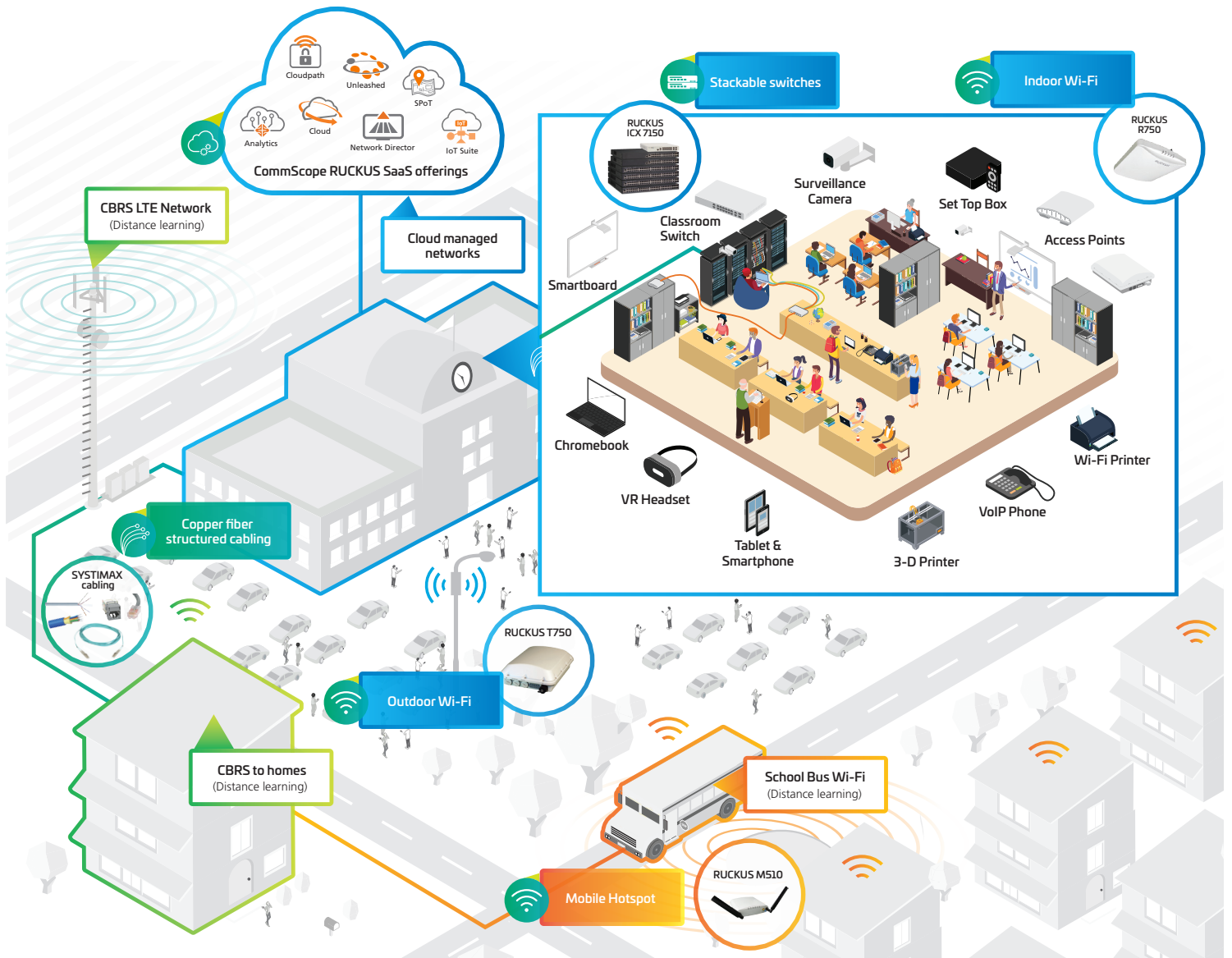
Cat 6A and Powered Fiber (indoor and outdoor cabling to connect security cameras, sensors and small cells)

## Switching Technology

Multigigabit stackable switches with PoE (delivers high-end routing and security capabilities suitable for any school or district network)

## Cloud-Managed Solutions

SaaS offerings (Cloudpath ES, RUCKUS Cloud Network Monitoring, IoT Networking, RUCKUS SPoT, RUCKUS Analytics)



# Table of Contents

Access Points for E-Rate.....	6
Indoor Access Points.....	6
Outdoor Access Points.....	7
T710 .....	7
T750 .....	7
T610 .....	8
T350 .....	8
T310 .....	9
ICX Switches for E-Rate.....	10
ICX 7150 – Compact.....	10
ICX 7150 .....	10
ICX 7150 Z-Series.....	12
ICX 7250 .....	12
ICX 7450 .....	13
ICX 7550 .....	14
ICX 7650 .....	15
ICX 7750 .....	16
ICX 7850 .....	16
Accessories for E-Rate.....	17
Accessories (Optics, Cables, Connectors & Power Cords).....	17
Software, Licenses, and Services for E-Rate .....	19
Physical SmartZone .....	19
Virtual SmartZone.....	19
SmartZone Data Plane and Virtual Data Plane .....	20
ZoneDirector.....	21
RUCKUS One.....	21
RUCKUS One Bundle .....	23
Switch Management Bundle.....	23
Cloud Subscription for Education.....	24
Subscription Bundles of RUCKUS Analytics and SmartZone .....	24
RUCKUS Analytics.....	25
Watchdog Remote Support for ICX.....	25
Watchdog Support for SmartZone .....	26
Watchdog Support for Unleashed Access Points.....	26
Education Watchdog Support for ZoneDirector 1205.....	26

# Access Points for E-Rate



INDOOR ACCESS POINTS				
Product Name	SKU/Part Number	Description	E-Rate Eligibility %	E-Rate Category
R850	9U1-R850-XX00	RUCKUS Unleashed R850 dual-band 802.11abgn/ac/ax Wireless Access Point with Multi-Gigabit Ethernet backhaul, 8x8:8 streams (5GHz) 4x4:4 streams (2.4GHz), OFDMA, MU-MIMO, BeamFlex+, dual ports, PoH/uPoE/802.3at PoE support. Does not include power adapter or PoE injector. Includes Limited Lifetime Warranty.	100%	Cat 2 (IC, MIBS)
R750	901-R750-XX00	RUCKUS R750 dual-band 802.11abgn/ac/ax Wireless Access Point with Multi-Gigabit Ethernet backhaul and onboard BLE/Zigbee, 4x4:4 streams (5GHz) 4x4:4 streams (2.4GHz), OFDMA, MU-MIMO, BeamFlex+, dual ports, 802.3at PoE support. Does not include power adapter or PoE injector. Includes Limited Lifetime Warranty.		
R730	901-R730-XX00	RUCKUS R730 dual-band 802.11abgn/ac/ax Wireless Access Point with Multi-Gigabit Ethernet backhaul, 8x8:8 streams (5GHz) 4x4:4 streams (2.4GHz), OFDMA, MU-MIMO, BeamFlex+, dual ports, PoH/uPoE/802.3at PoE support. Does not include power adapter or PoE injector. Includes Limited Lifetime Warranty.		
R710	9U1-R710-xx00	RUCKUS R710 Unleashed, dual-band 802.11abgn/ac Wireless Access Point, 4x4:4 streams, MU-MIMO, BeamFlex+, dual ports, 802.3af/at PoE support. Does not include power adapter or PoE injector. Includes Limited Lifetime Warranty.		
	901-R710-XX00	RUCKUS R710 dual-band 802.11abgn/ac Wireless Access Point, 4x4:4 streams, MU-MIMO, BeamFlex+, dual ports, 802.3af/at PoE support. Does not include power adapter or PoE injector. Includes Limited Lifetime Warranty.		
R650	901-R650-xx00	RUCKUS R650 dual-band 802.11abgn/ac/ax Wireless Access Point with Multi-Gigabit Ethernet backhaul, 4x4:4 + 2x2:2 streams, OFDMA, MU-MIMO, BeamFlex+, dual ports, PoH/uPoE/802.3at PoE support. Does not include power adapter or PoE injector. Includes Limited Lifetime Warranty.		
	9U1-R650-XX00	RUCKUS Unleashed R650 dual-band 802.11abgn/ac/ax Wireless Access Point with Multi-Gigabit Ethernet backhaul, 4x4:4 + 2x2:2 streams, OFDMA, MU-MIMO, BeamFlex+, dual ports, PoH/uPoE/802.3at PoE support. Does not include power adapter or PoE injector. Includes Limited Lifetime Warranty.		
R550	9U1-R550-XX00	RUCKUS R550 dual-band 802.11abgn/ac/ax Wireless Access Point with Multi-Gigabit Ethernet backhaul and onboard BLE/Zigbee, 2x2:2 streams (2.4GHz/5GHz) OFDMA, MU-MIMO, BeamFlex+, dual ports, 802.3at PoE support. Does not include power adapter or PoE injector. Includes Limited Lifetime Warranty.		
	9U1-R550-XX00	RUCKUS Unleashed R550 dual-band 802.11abgn/ac/ax Wireless Access Point with Multi-Gigabit Ethernet backhaul and onboard BLE/Zigbee, 2x2:2 streams (2.4GHz/5GHz) OFDMA, MU-MIMO, BeamFlex+, dual ports, 802.3at PoE support. Does not include power adapter or PoE injector. Includes Limited Lifetime Warranty.		
R350	901-R350-xx02	RUCKUS R350 dual-band 802.11abgn/ac/ax Wireless Access Points, 2x2:2 streams (2.4GHz/5GHz) OFDMA, MU-MIMO, BeamFlex+, 802.3af PoE support. Does not include power adapter or PoE injector. Includes Limited Lifetime Warranty		
R320	901-R320-XX02	Entry level RUCKUS R320, dual band 802.11ac Indoor Access Point, BeamFlex, 2x2:2, 1-Port, PoE, Does not include power adapter or PoE Injector. Limited Lifetime Warranty.		
	9U1-R320-XX02	RUCKUS R320 Unleashed, dual band 802.11ac Wave 2 Indoor Access Point, BeamFlex, 2x2:2, 1-Port, PoE. Does not include power adapter or PoE Injector. Limited Lifetime Warranty.		

# Access Points for E-Rate



T710



T750

## OUTDOOR ACCESS POINTS

Product Name	SKU/Part Number	Description	E-Rate Eligibility %	E-Rate Category
T750	901-T750-XX01	RUCKUS T750 802.11ax Outdoor Wireless Access Point, 4x4:4 Stream, Omnidirectional Beamflex+ coverage, 2.4GHz and 5GHz concurrent dual band, (1x) 2.5G Ethernet port, (1x) 10/100/1000 Ethernet port, 100-240 Vac, POE in and PSE out, Fiber SFP/SFP+, GPS, IP-67 Outdoor enclosure, -40 to 65C Operating Temperature.	100%	Cat 2 (IC, MIBS)
	901-T750-XX51	RUCKUS T750SE 802.11ax Outdoor Wireless Access Point, 4x4:4 Stream, 120-Degree Sector antenna included and option to attach external antennae, 2.4GHz and 5GHz concurrent dual band, (1x) 2.5G Ethernet port, (1x) 10/100/1000 Ethernet port, 100-240 Vac, POE in and PSE out, Fiber SFP/SFP+, GPS, IP-67 Outdoor enclosure, -40 to 65C Operating Temperature.		
	9U1-T750-XX01	RUCKUS Unleashed T750 802.11ax Outdoor Wireless Access Point, 4x4:4 Stream, Omnidirectional Beamflex+ coverage, 2.4GHz and 5GHz concurrent dual band, (1x) 2.5G Ethernet port, (1x) 10/100/1000 Ethernet port, 100-240 Vac, POE in and PSE out, Fiber SFP/SFP+, GPS, IP-67 Outdoor enclosure, -40 to 65C Operating Temperature.		
	9U1-T750-XX51	RUCKUS Unleashed T750SE 802.11ax Outdoor Wireless Access Point, 4x4:4 Stream, 120-Degree Sector antenna included and option to attach external antennae, 2.4GHz and 5GHz concurrent dual band, (1x) 2.5G Ethernet port, (1x) 10/100/1000 Ethernet port, 100-240 Vac, POE in and PSE out, Fiber SFP/SFP+, GPS, IP-67 Outdoor enclosure, -40 to 65C Operating Temperature.		
T710	901-T710-xx01	RUCKUS T710 802.11ac Outdoor Wireless Access Point, 4x4:4 Stream, Omnidirectional Beamflex+ coverage, 2.4GHz and 5GHz concurrent dual band, Dual 10/100/1000 Ethernet ports, 90-264 Vac, POE in and POE out, Fiber SFP, GPS, IP-67 Outdoor enclosure, -40 to 65C Operating Temperature. Includes standard 1-year warranty. For box contents, see Shipping Container Contents.	100%	Cat 2 (IC, MIBS)
	901-T710-xx51	RUCKUS T710s 802.11ac Outdoor Wireless Access Point, 4x4:4 Stream, 120 degree sector Beamflex+ coverage, 2.4GHz and 5GHz concurrent dual band, Dual 10/100/1000 Ethernet ports, 90-264 Vac, POE in and POE out, Fiber SFP, GPS, IP-67 Outdoor enclosure, -40 to 65C Operating Temperature. Includes standard 1-year warranty. For box contents, see Shipping Container Contents.		
	9U1-T710-xx01	RUCKUS T710 Unleashed, 802.11ac Outdoor Wireless Access Point, 4x4:4 Stream, Omnidirectional Beamflex+ coverage, 2.4GHz and 5GHz concurrent dual band, Dual 10/100/1000 Ethernet ports, 90-264 Vac, POE in and POE out, Fiber SFP, GPS, IP-67 Outdoor enclosure, -40 to 65C Operating Temperature. Includes standard 1-year warranty. For box contents, see Shipping Container Contents.		
	9U1-T710-xx51	RUCKUS T710s Unleashed, 802.11ac Outdoor Wireless Access Point, 4x4:4 Stream, 120 degree sector Beamflex+ coverage, 2.4GHz and 5GHz concurrent dual band, Dual 10/100/1000 Ethernet ports, 90-264 Vac, POE in and POE out, Fiber SFP, GPS, IP-67 Outdoor enclosure, -40 to 65C Operating Temperature. Includes standard 1-year warranty. For box contents, see Shipping Container Contents.		

# Access Points for E-Rate



T610

OUTDOOR ACCESS POINTS				
Product Name	SKU/Part Number	Description	E-Rate Eligibility %	E-Rate Category
T610	901-T610-XX01	RUCKUS T610 802.11ac Outdoor Wireless Access Point, 4x4:4 Stream, Omnidirectional Beamflex+ coverage, 2.4GHz and 5GHz concurrent dual band, Dual 10/100/1000 Ethernet ports, POE in, IP-67 Outdoor enclosure, -40 to 65C Operating Temperature. Includes standard 1-year warranty. Mounting kit sold as separate accessory (902-0125-0000). For box contents, see Shipping Container Contents.	100%	Cat 2 (IC, MIBS)
	901-T610-XX51	RUCKUS T610s 802.11ac Outdoor Wireless Access Point, 4x4:4 Stream, 120 degree sector Beamflex+ coverage, 2.4GHz and 5GHz concurrent dual band, Dual 10/100/1000 Ethernet ports, POE in, IP-67 Outdoor enclosure, -40 to 65C Operating Temperature. Includes standard 1-year warranty. Mounting kit sold as separate accessory (902-0125-0000). For box contents, see Shipping Container Contents.		
	9U1-T610-xx01	Unleashed T610 802.11ac Wave 2 Outdoor Wireless Access Point, 4x4:4 Stream, MU-MIMO, Omnidirectional Beamflex+ coverage, 2.4GHz and 5GHz concurrent dual band, Dual 10/100/1000 Ethernet ports, POE in, IP-67 Outdoor enclosure, -40 to 65C Operating Temperature. Includes standard 1-year warranty. Mounting kit sold as separate accessory (902-0125-0000). For box contents, see Shipping Container Contents.		
	9U1-T610-xx51	Unleashed T610s 802.11ac Wave 2 Outdoor Wireless Access Point, 4x4:4 Stream, MU-MIMO, 120 degree sector Beamflex+ coverage, 2.4GHz and 5GHz concurrent dual band, Dual 10/100/1000 Ethernet ports, POE in, IP-67 Outdoor enclosure, -40 to 65C Operating Temperature. Includes standard 1-year warranty. Mounting kit sold as separate accessory (902-0125-0000). For box contents, see Shipping Container Contents.		



T350

OUTDOOR ACCESS POINTS				
Product Name	SKU/Part Number	Description	E-Rate Eligibility %	E-Rate Category
T350	901-T350-XX20	RUCKUS T350c, omni, outdoor access point, 802.11ax 2x2:2 internal BeamFlex+, dual band concurrent. One Ethernet port, PoE input. -20°C to 65°C Operating Temperature. Includes mounting bracket. Does not include PoE injector.	100%	Cat 2 (IC, MIBS)
	901-T350-XX40	RUCKUS T350d, omni, outdoor access point, 802.11ax 2x2:2 internal BeamFlex+, dual band concurrent. One Ethernet port, PoE input, DC input, USB. -40°C to 65°C Operating Temperature. Includes mounting bracket. Does not include PoE injector.		



# Access Points for E-Rate



T310

OUTDOOR ACCESS POINTS				
Product Name	SKU/Part Number	Description	E-Rate Eligibility %	E-Rate Category
T310	901-T310-XX40	Entry-level T310d, omni, outdoor Access point, 802.11ac Wave 2 2x2:2 internal BeamFlex+, dual band concurrent. One ethernet port, PoE input, DC input and USB port. Includes mounting bracket and one year warranty. Does not include PoE injector.	100%	Cat 2 (IC, MIBS)
	901-T310-XX20	RUCKUS T310c, omni, outdoor Access point, 802.11ac Wave 2 2x2:2 internal BeamFlex+, dual band concurrent. One ethernet port, PoE input. Includes mounting bracket and one year warranty. Does not include PoE injector.		
	901-T310-XX51	RUCKUS T310s, 120x30 deg, Outdoor 802.11ac Wave 2 2x2:2, 120 degree sector, dual band concurrent Access point. One ethernet port, PoE input, DC input and USB port. Includes adjustable mounting bracket and one year warranty. Does not include PoE injector.		
	901-T310-XX61	T310n, 30x30 deg, Outdoor 802.11ac 2x2:2 Wave 2, narrow beam, dual band concurrent access point. One Ethernet port, PoE input, DC Input and USB port. Includes adjustable mounting bracket and one year warranty. Does not include PoE injector		
	9U1-T310-XX20	Unleashed T310c, omni, outdoor access point, 802.11ac Wave 2 2x2:2 internal BeamFlex+, dual band concurrent. One ethernet port, PoE input and -200 C. Includes mounting bracket and one year warranty. Does not include PoE injector.		
	9U1-T310-XX40	Unleashed T310d, omni, outdoor access point, 802.11ac Wave 2 2x2:2 internal BeamFlex+, dual band concurrent. One ethernet port, PoE input, -400 C, DC input and USB port. Includes mounting bracket and one year warranty. Does not include PoE injector.		
	9U1-T310-XX51	Unleashed T310s, 120x30 deg, Outdoor 802.11ac Wave 2 2x2:2, 120 degree sector, dual band concurrent access point. One ethernet port, PoE input, -400 C, DC input and USB port. Includes adjustable mounting bracket and one year warranty. Does not include PoE injector.		
	9U1-T310-XX61	Unleashed T310n, 30x30 deg, Outdoor 802.11ac 2x2:2 Wave 2, narrow beam, dual band concurrent access point. One Ethernet port, PoE input, -400 C, DC Input and USB port. Includes adjustable mounting bracket and one year warranty. Does not include PoE injector		

# ICX Switches for E-Rate



ICX 7150 – Compact

ICX 7150 – COMPACT (ACCESS/EDGE SWITCH)			
SKU/Part Number	Description	E-Rate Eligibility %	E-Rate Category
ICX7150-C10ZP-2X10GR	ICX 7150 Compact Switch, 2x 100/1000/2.5/5/10G PoH ports, 2x 100/1000/2.5G PoH ports, 6x 100/1000/2.5G PoE+ ports, 2x 10G SFP uplink-ports, 240W PoE budget, L3 features (OSPF, VRRP, PIM, PBR)	100%	Cat 2 (IC, MIBS)
ICX7150-C10ZP-2X10GR-RMT3	ICX 7150 Compact Switch, 2x 100/1000/2.5/5/10G PoH ports, 2x 100/1000/2.5G PoH ports, 6x 100/1000/2.5G PoE+ ports, 2x 10G SFP uplink-ports, 240W PoE budget, L3 features (OSPF, VRRP, PIM, PBR), 3 year remote support.		
ICX7150-C10ZP-2X10GR-A	ICX 7150 Compact Switch, 2x 100/1000/2.5/5/10G PoH ports, 2x 100/1000/2.5G PoH ports, 6x 100/1000/2.5G PoE+ ports, 2x 10G SFP uplink-ports, 240W PoE budget, L3 features (OSPF, VRRP, PIM, PBR), TAA		
ICX7150-C08P-2X1G-RMT3	ICX 7150 Compact Switch, 8x 10/100/1000 PoE+ ports, 2x 1G SFP uplink-ports, 62W PoE budget, L2 (switch image only), 3 year remote support.		
ICX7150-C08PT-2X1G-RMT3	ICX 7150 Compact Switch Extended Temp, 8x 10/100/1000 PoE+ ports, 2x 1G SFP uplink-ports, 62W PoE budget, L2 (switch image only), 3 year remote support. 13 month hardware warranty.		



ICX 7150

ICX 7150 (ACCESS/EDGE SWITCH)			
SKU/Part Number	Description	E-Rate Eligibility %	E-Rate Category
ICX7150-24-4X1G	ICX 7150 Switch, 24x 10/100/1000 ports, 2x 1G RJ45 uplink-ports, 4x 1G SFP uplink-ports upgradable to up to 4x 10G SFP+ with license, basic L3 (static routing and RIP)	100%	Cat 2 (IC, MIBS)
ICX7150-24-2X10G	ICX 7150 Switch, 24x 10/100/1000 ports, 2x 1G RJ45 uplink-ports, 2x 1G SFP and 2x 10G SFP+ uplink-ports upgradable to 4x 10G SFP+ with license, basic L3 (static routing and RIP)		
ICX7150-24-4X10GR-RMT3	ICX 7150 Switch, 24x 10/100/1000 ports, 2x 1G RJ45 uplink-ports, 4x 10G SFP+ uplink-ports, L3 features (OSPF, VRRP, PIM, PBR), 3 year remote support.		
ICX7150-24-4X10GR-A	ICX 7150 Switch, 24x 10/100/1000 ports, 2x 1G RJ45 uplink-ports, 4x 10G SFP+ uplink-ports, L3 features (OSPF, VRRP, PIM, PBR), TAA		
ICX7150-24P-4X1G	ICX 7150 Switch, 24x 10/100/1000 PoE+ ports, 2x 1G RJ45 uplink-ports, 4x 1G SFP uplink ports upgradable to up to 4x 10G SFP+ with license, 370W PoE budget, basic L3 (static routing and RIP)		
ICX7150-24P-2X10G	ICX 7150 Switch, 24x 10/100/1000 PoE+ ports, 2x 1G RJ45 uplink-ports, 2x 1G SFP and 2x 10G SFP+ uplink-ports upgradable to 4x 10G SFP+ with license 370W PoE budget, basic L3 (static routing and RIP)		
ICX7150-24P-4X10GR-RMT3	ICX 7150 Switch, 24x 10/100/1000 PoE+ ports, 2x 1G RJ45 uplink-ports, 4x 10G SFP+ uplink-ports, 370W PoE budget, L3 features (OSPF, VRRP, PIM, PBR), 3 year remote support.		

# ICX Switches for E-Rate



ICX 7150 (ACCESS/EDGE SWITCH)			
SKU/Part Number	Description	E-Rate Eligibility %	E-Rate Category
ICX7150-24P-4X10GR-A	ICX 7150 Switch, 24x 10/100/1000 PoE+ ports, 2x 1G RJ45 uplink-ports, 4x 10G SFP+ uplink-ports, 370W PoE budget, L3 features (OSPF, VRRP, PIM, PBR), TAA	100%	Cat 2 (IC, MIBS)
ICX7150-48-2X10G	ICX 7150 Switch, 48x 10/100/1000 ports, 2x 1G RJ45 uplink-ports, 2x 1G SFP and 2x 10G SFP+ uplink-ports upgradable to 4x 10G SFP+ with license, basic L3 (static routing and RIP)		
ICX7150-48-4X10GR-RMT3	ICX 7150 Switch, 48x 10/100/1000 ports, 2x 1G RJ45 uplink-ports, 4x 10G SFP+ uplink-ports, L3 features (OSPF, VRRP, PIM, PBR), 3 year remote support.		
ICX7150-48-4X10GR-A	ICX 7150 Switch, 48x 10/100/1000 ports, 2x 1G RJ45 uplink-ports, 4x 10G SFP+ uplink-ports, L3 features (OSPF, VRRP, PIM, PBR), TAA		
ICX7150-48P-4X1G	ICX 7150 Switch, 48x 10/100/1000 PoE+ ports, 2x 1G RJ45 uplink-ports, 4x 1G SFP uplink ports upgradable to up to 4x 10G SFP+ with license, 370W PoE budget, basic L3 (static routing and RIP)		
ICX7150-48P-2X10G	ICX 7150 Switch, 48x 10/100/1000 PoE+ ports, 2x 1G RJ45 uplink-ports, 2x 1G SFP and 2x 10G SFP+ uplink-ports upgradable to 4x 10G SFP+ with license, 370W PoE budget, basic L3 (static routing and RIP)		
ICX7150-48P-4X10GR-RMT3	ICX 7150 Switch, 48x 10/100/1000 PoE+ ports, 2x 1G RJ45 uplink-ports, 4x 10G SFP+ uplink-ports, 370W PoE budget, L3 features (OSPF, VRRP, PIM, PBR), 3 year remote support.		
ICX7150-48P-4X10GR-A	ICX 7150 Switch, 48x 10/100/1000 PoE+ ports, 2x 1G RJ45 uplink-ports, 4x 10G SFP+ uplink-ports, 370W PoE budget, L3 features (OSPF, VRRP, PIM, PBR), TAA		
ICX7150-48PF-4X1G	ICX 7150 Switch, 48x 10/100/1000 PoE+ ports, 2x 1G RJ45 uplink-ports, 4x 1G SFP uplink ports upgradable to up to 4x 10G SFP+ with license, 740W PoE budget, basic L3 (static routing and RIP)		
ICX7150-48PF-2X10G	ICX 7150 Switch, 48x 10/100/1000 PoE+ ports, 2x 1G RJ45 uplink-ports, 2x 1G SFP and 2x 10G SFP+ uplink-ports upgradable to 4x 10G SFP+ with license, 740W PoE budget, basic L3 (static routing and RIP)		
ICX7150-48PF-4X10GR-RMT3	ICX 7150 Switch, 48x 10/100/1000 PoE+ ports, 2x 1G RJ45 uplink-ports, 4x 10G SFP+ uplink-ports, 740W PoE budget, L3 features (OSPF, VRRP, PIM, PBR), 3 year remote support.		
BR-ICX-7150-210U410R-P-01	CoE certificate license to upgrade any ICX 7150 24-port or 48-port model from 2x 1G SFP & 2x 10G SFP+ to 4x 10G SFP+ uplink ports. Also includes L3 features (OSPF, VRRP, PIM, PBR)		
BR-ICX-7150-41U210-P-01	CoE certificate license to upgrade any ICX 7150 24-port or 48-port model from 4x 1G SFP to 2x 1G SFP & 2x 10G SFP+ uplink ports.		
BR-ICX-7150-41U410R-P-01	CoE certificate license to upgrade any ICX 7150 24-port or 48-port model from 4x 1G SFP to 4x 10G SFP+ uplink ports. Also includes L3 features (OSPF, VRRP, PIM, PBR)		
BR-ICX-7150C-21U210R-P-01	CoE certificate license to upgrade the ICX 7150-C12P compact switch from 2x 1G SFP to 2x 10G SFP+ uplink ports. Also includes L3 features (OSPF, VRRP, PIM, PBR)		
BR-ICX-7150Z210U810R-P-01	CoE certificate license to upgrade the ICX 7150-48ZP, Z-Series switch from 2x 10G SFP+ to 8x 10G SFP+ uplink ports. Also includes L3 features (OSPF, VRRP, PIM, PBR)		

# ICX Switches for E-Rate



ICX 7150 Z-series

ICX 7150 Z-SERIES (ACCESS/EDGE SWITCH)			
SKU/Part Number	Description	E-Rate Eligibility %	E-Rate Category
ICX7150-48ZP-E2X10G	ICX 7150-48ZP Switch Z-Series, 16x 100/1000/2.5G PoH ports, 32x 10/100/1000 PoE+ ports, 2x 10G SFP+ and 6x 1G SFP uplink-ports upgradable to 8x 10G SFP+ with license. Basic L3 (static routing and RIP). 1 RPS20-E Power Supply, 1 Fan tray.	100%	Cat 2 (IC, MIBS)
ICX7150-48ZP-E8X10GR-RMT3	ICX 7150-48ZP Switch Z-Series, 16x 100/1000/2.5G PoH ports, 32x 10/100/1000 PoE+ ports, 8x 10G SFP+, L3 features (OSPF, VRRP, PIM, PBR). 1 RPS20-E Power Supply, 1 Fan tray. 3 years remote support		
ICX7150-48ZP-E8X10GR2-A	ICX 7150-48ZP Switch Z-Series, 16x 100/1000/2.5G PoH ports, 32x 10/100/1000 PoE+ ports, 8x 10G SFP+, L3 features (OSPF, VRRP, PIM, PBR). 2 RPS20-E Power Supplies, 2 Fan trays. TAA		



ICX 7250

ICX 7250 (ACCESS/EDGE SWITCH)			
SKU/Part Number	Description	E-Rate Eligibility %	E-Rate Category
ICX7250-24 ICX7250-24-2X10G	24-port 1 GbE switch bundle with 2x1GbE/10GbE + 6x1GbE SFP+ (upgradeable to 10GbE) uplink/stacking ports upgrade	100%	Cat 2 (IC, MIBS)
ICX7250-24G	24-port 1 GbE switch with 4x1GbE SFP uplink ports		
ICX7250-24P	24-port 1 GbE switch PoE+ 370W with 8x1GbE SFP+ (upgradeable to 10GbE) uplink ports		
ICX7250-24P-2X10G	24-port 1 GbE switch PoE+ 370W bundle with 2x1GbE/10GbE + 6x1GbE SFP+ (upgradeable to 10GbE) uplink/stacking ports upgrade		
ICX7250-48	48-port 1 GbE switch with 8x1GbE SFP+ (upgradeable to 10GbE) uplink ports		
ICX7250-48-2X10G	48-port 1 GbE switch bundle with 2x1GbE/10GbE + 6x1GbE SFP+ (upgradeable to 10GbE) uplink/stacking ports upgrade		
ICX7250-48P	48-port 1 GbE switch PoE+ 740W with 8x1GbE SFP+ (upgradeable to 10GbE) uplink ports		
ICX7250-48P-2X10G	48-port 1 GbE switch PoE+ 740W bundle with 2x1GbE/10GbE + 6x1GbE SFP+ (upgradeable to 10GbE) uplink/stacking ports upgrade		
ICX7250-PREM-LI	ICX7250 Layer 3 Premium Software License		
ICX7250-2X10G-LIC-POD	ICX7250 upgrade from 8x1GE uplink ports to 2x1/10GE + 6x1GE uplink/stacking ports. Only one 2X10G license upgrade can be applied to an ICX7250.		
ICX7250-8X10G-LIC-POD	ICX7250 upgrade from 2X1/10GE + 6X1GE uplink/stacking ports to 8X1/10GE uplink/stacking ports. This can only be applied to an ICX7250 that already has a 2X10G license applied.		

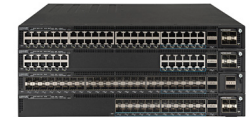
# ICX Switches for E-Rate



ICX 7450

ICX 7450 (AGGREGATION/CORE SWITCH) (ACCESS/EDGE SWITCH)					
SKU/Part Number	Description	E-Rate Eligibility %	E-Rate Category		
ICX7450-24	24-port 1 GbE switch, 3 modular slots for optional uplinks/stacking. Power supply, fan & modules need to be ordered separately.	100%	Cat 2 (IC, MIBS)		
ICX7450-24-40G-E	24-port 1 GbE switch bundle includes 3x40G QSFP+ uplinks/stacking, 1x250W AC power supply and one fan, front to back airflow				
ICX7450-24-E	24-port 1 GbE switch bundle includes 4x10G SFP+ uplinks, 2x40G QSFP+ uplinks/stacking, 1x250W AC power supply and one fan, front to back airflow				
ICX7450-24P	24-port 1 GbE switch PoE+, 3 modular slots for optional uplinks/stacking. Power supply, fan & modules need to be ordered separately				
ICX7450-24P-40G-E	24-port 1 GbE switch PoE+ bundle includes 3x40G QSFP+ uplinks/stacking, 1x1000W AC power supply and one fan, front to back airflow				
ICX7450-24P-E2	24-port 1 GbE switch PoE+ bundle includes 4x10G SFP+ uplinks, 2x40G QSFP+ uplinks/stacking, 2x1000W AC power supply and two fans, front to back airflow				
ICX7450-24P-E-RMT3	24-port 1 GbE switch PoE+ bundle includes 4x10G SFP+ uplinks, 2x40G QSFP+ uplinks/stacking, 1x1000W AC power supply and one fan, front to back airflow, 3 years 24x7 remote support				
ICX7450-48	48-port 1 GbE switch, 3 modular slots for optional uplinks/stacking. Power supply, fan & modules need to be ordered separately				
ICX7450-48-E	48-port 1 GbE switch bundle includes 4x10G SFP+ uplinks, 2x40G QSFP+ uplinks/stacking, 1x250W AC power supply and one fan, front to back airflow				
ICX7450-48F	48-port 1 GbE SFP fiber switch, 3 modular slots for optional uplinks/stacking. Power supply, fan & modules need to be ordered separately				
ICX7450-48F-E2	48-port 1 GbE SFP fiber switch bundle includes 4x10G SFP+ uplinks, 2x40G QSFP+ uplinks/stacking, 2x250W AC power supply and two fans, front to back airflow				
ICX7450-48F-E-RMT3	48-port 1 GbE SFP fiber switch bundle includes 4x10G SFP+ uplinks, 2x40G QSFP+ uplinks/stacking, 1x250W AC power supply and one fan, front to back airflow, 3 years 24x7 remote support				
ICX7450-48P	48-port 1 GbE switch PoE+, 3 modular slots for optional uplinks/stacking. Power supply, fan & modules need to be ordered separately				
ICX7450-48P-E2	48-port 1 GbE switch PoE+ bundle includes 4x10G SFP+ uplinks, 2x40G QSFP+ uplinks/stacking, 2x1000W AC power supply and two fans, front to back airflow				
ICX7450-48P-E-RMT3	48-port 1 GbE switch PoE+ bundle includes 4x10G SFP+ uplinks, 2x40G QSFP+ uplinks/stacking, 1x1000W AC power supply and one fan, front to back airflow, 3 years 24x7 remote support				
ICX7450-48P-STK-E-RMT3	48-port 1 GbE switch PoE+ bundle includes 2x40G QSFP+ uplinks/stacking, 1x1000W AC power supply and one fan, front to back airflow, 3 years 24x7 remote support (stack member)				
ICX-MACSEC-LIC	ICX MACSEC LICENSE				
ICX7450-Prem-Lic	ICX 7450 LAYER 3 PREMIUM SOFTWARE LICENSE				

# ICX Switches for E-Rate



ICX 7550

ICX 7550 (AGGREGATION/CORE SWITCH)			
SKU/Part Number	Description	E-Rate Eligibility %	E-Rate Category
ICX7550-24	ICX 7550 24-port 10/100/1000 Mbps with 2-ports 40 Gbps Uplink/Stack QSFP+, module slot, no fans, no power supplies installed. Transceivers sold separately	100%	Cat 2 (IC, MIBS)
ICX7550-24-E2	ICX 7550 24-port 10/100/1000 Mbps with 2-ports 40 Gbps Uplink/Stack QSFP+, module slot, three fans, two AC power supplies with exhaust airflow installed. Transceivers sold separately		
ICX7550-48	ICX 7550 48-port 10/100/1000 Mbps with 2-ports 40 Gbps Uplink/Stack QSFP+, module slot, no fans, no power supplies installed. Transceivers sold separately		
ICX7550-48-E2	ICX 7550 48-port 10/100/1000 Mbps with 2-ports 40 Gbps Uplink/Stack QSFP+, module slot, three fans, two AC power supplies with exhaust airflow installed. Transceivers sold separately		
ICX7550-24P	ICX 7550 24-port 10/100/1000 Mbps 802.3at POE+ with 2-ports 40 Gbps Uplink/Stack QSFP+, module slot, no fans, no power supplies installed. Transceivers sold separately		
ICX7550-24P-E2-R3	ICX 7550 24-port 10/100/1000 Mbps 802.3at POE+ with 2-ports 40 Gbps Uplink/Stack QSFP+, module slot, three fans, two AC power supplies with exhaust airflow installed. 3-years TAC support. Transceivers sold separately		
ICX7550-48P	ICX 7550 48-port 10/100/1000 Mbps 802.3at POE+ with 2-ports 40 Gbps Uplink/Stack QSFP+, module slot, no fans, no power supplies installed. Transceivers sold separately		
ICX7550-48P-E2-R3	ICX 7550 48-port 10/100/1000 Mbps 802.3at POE+ with 2-ports 40 Gbps Uplink/Stack QSFP+, module slot, three fans, two AC power supplies with exhaust airflow installed. 3-years TAC support. Transceivers sold separately		
ICX7550-24ZP	ICX 7550 12-port 10/100/1000/2500 Mbps 802.3bt POE, 12-port 100/1000/2500/50000/10000 Mbps 802.3bt POE with 2-ports 40/100 Gbps Uplink/Stack QSFP28, module slot, no fans, no power supplies installed. Transceivers sold separately		
ICX7550-24ZP-E2	ICX 7550 12-port 10/100/1000/2500 Mbps 802.3bt POE, 12-port 100/1000/2500/50000/10000 Mbps 802.3bt POE with 2-ports 40/100 Gbps Uplink/Stack QSFP28, module slot, three fans, two AC power supplies with exhaust airflow installed. Transceivers sold separately		
ICX7550-24ZP-E2-R3	ICX 7550 12-port 10/100/1000/2500 Mbps 802.3bt POE, 12-port 100/1000/2500/50000/10000 Mbps 802.3bt POE with 2-ports 40/100 Gbps Uplink/Stack QSFP28, module slot, three fans, two AC power supplies with exhaust airflow installed. 3-years TAC support. Transceivers sold separately		
ICX7550-48ZP-E2-R3	ICX 7550 36-port 10/100/1000/2500 Mbps 802.3bt POE, 12-port 100/1000/2500/50000/10000 Mbps 802.3bt POE with 2-ports 40/100 Gbps Uplink/Stack QSFP28, module slot, three fans, two AC power supplies with exhaust airflow installed. 3-years TAC support. Transceivers sold separately		
ICX7550-24F	ICX 7550 24-port 1/10 Gbps with 2-ports 40/100 Gbps Uplink/Stack QSFP28, module slot, no fans, no power supplies installed. Transceivers sold separately		
ICX7550-24F-E2-R3	ICX 7550 24-port 1/10 Gbps with 2-ports 40/100 Gbps Uplink/Stack QSFP28, module slot, two AC power supplies, three fans exhaust airflow with exhaust airflow installed, 3-years TAC support. Transceivers sold separately		
ICX7550-48F	ICX 7550 36-port 100/1000 Mbps SFP, 12-port 1/10 Gbps SFP+ with 2-ports 40/100 Gbps Uplink/Stack QSFP28, module slot, no fans, no power supplies installed. Transceivers sold separately		

# ICX Switches for E-Rate



ICX 7550 (AGGREGATION/CORE SWITCH)			
SKU/Part Number	Description	E-Rate Eligibility %	E-Rate Category
ICX7550-48F-E2-R3	ICX 7550 36-port 100/1000 Mbps SFP, 12-port 1/10 Gbps SFP+ with 2-ports 40/100 Gbps Uplink/Stack QSFP28, two AC power supplies, three fans exhaust airflow with exhaust airflow installed, 3-years TAC support. Transceivers sold separately	100%	Cat 2 (IC, MIBS)
ICX-MACSEC-LIC	ICX MACSEC LICENSE		
ICX7550-PREM-LIC	ICX 7550 LAYER 3 PREMIUM LICENSE		



ICX 7650

ICX 7650 (AGGREGATION/CORE SWITCH)			
SKU/Part Number	Description	E-Rate Eligibility %	E-Rate Category
ICX7650-48ZP-E2	48-port; 24-port 100MbE/1GbE/2.5GbE/5GbE/10GbE POH, 24-port 10MbE/100MbE/1GbE PoE+, 4xQSFP (either 2x100GbE or 4x40GbE), modular slot bundle includes 2 1000W AC power supplies and 2 fans, front to back airflow, transceivers sold separately	100%	Cat 2 (IC, MIBS)
ICX7650-48P-E2	48-port 10MbE/100MbE/1GbE PoE+, 4xQSFP (either 2x100GbE or 4x40GbE), modular slot bundle includes two 1000W AC power supplies and two fans, front to back airflow, transceivers sold separately		
ICX7650-48F-E2	48-port; 24-port 1GbE/10GbE SFP+, 24-port 100MbE/1 GbE SFP, 4xQSFP (either 2x100GbE or 4x40GbE), modular slot, bundle includes two 250W AC power supplies and two fans, front to back airflow, transceivers sold separately		
ICX7650-48ZP-E-RMT3	48-port; 24-port 100MbE/1GbE/2.5GbE/5GbE/10GbE POH, 24-port 10MbE/100MbE/1GbE PoE+, 4xQSFP (2x100GbE or 4x40Gb), modular slot, bundle includes 1 1000W AC PS and 1 fan, front to back airflow, transceivers sold separately, 3 yrs 24x7 remote support		
ICX7650-48P-E-RMT3	48-port 10MbE/100MbE/1GbE PoE+, 4xQSFP (either 2x100GbE or 4x40GbE), modular slot, bundle includes 1 1000W AC PS and 1 fan, front to back airflow, transceivers sold separately, 3 years 24x7 remote support		
ICX7650-48F-E-RMT3	48-port; 24-port 1GbE/10GbE SFP+, 24-port 100MbE/1GbE SFP, 4xQSFP (either 2x100GbE or 4x40GbE), modular slot, bundle includes 1 250W AC PS and 1 fan, front to back airflow, transceivers sold separately, 3 years 24x7 remote support		
ICX7650-48ZP	48-port; 24-port 100MbE/1GbE/2.5GbE/5GbE/10GbE POH, 24-port 10MbE/100MbE/1GbE PoE+, 4xQSFP (either 2x100GbE or 4x40GbE), modular slot, bundle includes one 1000W AC PS and one fan, front to back airflow, transceivers sold separately		
ICX7650-48P	48-port 10MbE/100MbE/1GbE PoE+, 4xQSFP (either 2x100GbE or 4x40GbE), modular slot bundle includes one 1000W AC PS and one fan, front to back airflow, transceivers sold separately		
ICX7650-48F	48-port; 24-port 1GbE/10GbE SFP+, 24-port 100MbE/1GbE SFP, 4xQSFP (either 2x100GbE or 4x40GbE), modular slot fiber switch bundle includes one 250W AC PS and one fan, front to back airflow, transceivers sold separately		
ICX-MACSEC-LIC	ICX MACSEC LICENSE		
ICX7650-PREM-LIC	ICX 7650 LAYER 3 PREMIUM SOFTWARE LICENSE		

# ICX Switches for E-Rate



ICX 7750

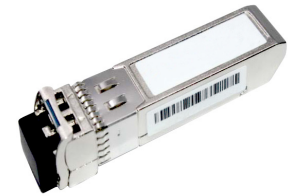
ICX 7750 (AGGREGATION/CORE SWITCH)			
SKU/Part Number	Description	E-Rate Eligibility %	E-Rate Category
ICX7750-26Q	RUCKUS ICX 7750 with 26 40GbE QSFP+ ports, and one modular slot. BASE layer 3 software feature set. Requires ICX7750-L3-COE to use advanced L3 features. Power supplies, fans, optional interface modules and optics ordered separately, not included.	100%	Cat 2 (IC, MIBS)
ICX7750-48C	RUCKUS ICX 7750 with 48 1/10GbE RJ-45 ports, 6 10/40GbE QSFP+ ports, one modular slot. BASE layer 3 software feature set. Requires ICX7750-L3-COE to use advanced L3 features. Power supplies, fans, optional interface modules optics ordered separately.		
ICX7750-48F-RMT3	RUCKUS ICX 7750 with 48 10GbE SFP+ ports, 6 10/40GbE QSFP+ ports, one modular slot. BASE layer 3 software feature set. Requires ICX7750-L3-COE to use advanced L3 features. Power supplies, fans, interface modules, optics ordered separately. 3yr RMT		
ICX7750-L3-COE	ICX7750 PREMIUM LAYER3 FEATURES CERTIFICATE OF ENTITLEMENT		



ICX 7850

ICX 7850 (AGGREGATION/CORE SWITCH)			
SKU/Part Number	Description	E-Rate Eligibility %	E-Rate Category
ICX7850-32Q-E2	ICX 7850 32-port QSFP28 supports native 40GE or 100GE, or breakout 4x10GE or 4x25GE, bundle includes two AC PS and six fans, PS side exhaust airflow, transceivers sold separately.	100%	Cat 2 (IC, MIBS)
ICX7850-48F-E2	ICX 7850 48-port SFP28 1/10/25GE, 8x-port QSFP28 supports native 40GE or 100GE or breakout 4x10GE or 4x25GE, bundle includes two AC PS and five fans, PS side exhaust airflow, transceivers sold separately.		
ICX7850-48FS-E2-RMT3	ICX 7850 48-port SFP+ 1/10GE, 8x-port QSFP28 supports native 40GE or 100GE or breakout 4x10GE or 4x25GE, bundle includes two AC PS and five fans, PS side exhaust airflow, transceivers sold separately, with 3-year remote support.		
ICX7850-32Q	ICX 7850 32-port QSFP28 supports native 40GE or 100GE, or breakout 4x10GE or 4x25GE, bundle includes two AC PS and six fans, PS side exhaust airflow, transceivers sold separately.		
ICX7850-48F	ICX 7850 48-port SFP28 1/10/25GE, 8x-port QSFP28 supports native 40GE or 100GE or breakout 4x10GE or 4x25GE, bundle includes two AC PS and five fans, PS side exhaust airflow, transceivers sold separately.		
ICX7850-48FS	ICX 7850 48-port SFP+ 1/10GE, 8x-port QSFP28 supports native 40GE or 100GE or breakout 4x10GE or 4x25GE, bundle includes two AC PS and five fans, PS side exhaust airflow, transceivers sold separately.		
ICX-MACSEC-LIC	ICX MACSEC LICENSE		
ICX7850-PREM-LIC	ICX7850 Premium feature license		





## ACCESSORIES (OPTICS, CABLES, CONNECTORS, AND POWER CORDS)

SKU/Part Number	Description	E-Rate Eligibility %	E-Rate Category
E1MG-100FX-IR-OM	100BASE-FX IR SFP optic for SMF with LC connector, optical monitoring capable. For distances, up to 15Km	100%	Cat 2 (IC, MIBS)
E1MG-100FX-OM	100BASE-FX SFP optic MMF, LC connector, optical monitoring capable		
E1MG-100FX-OM-8	100BASE-FX SFP optic MMF 8 pack, LC connector, optical monitoring capable, 8-pack		
E1MG-BXD	1000BASE-BXD SFP optic SMF, transmits at 1490nm and receives at 1310nm, LC connector, single strand SMF fiber. This optic should only be connected to an E1MG-BXU at the far end.		
E1MG-BXU	1000BASE-BXU SFP optic SMF, transmits at 1310nm and receives at 1490nm, LC connector, single strand SMF fiber. This optic should only be connected to an E1MG-BXD at the far end		
E1MG-LHA-OM	1000BASE-LHA SFP optic, SMF, LC connector, optical monitoring capable		
E1MG-LHA-OM-T	1000BASE-LHA SFP optic, SMF, LC connector, optical monitoring capable, industrial temperature (-40°C to 85°C)		
E1MG-LX-OM	1000Base-LX SFP optic, SMF, LC connector, Optical Monitoring Capable		
E1MG-LX-OM-8	1000BASE-LX SFP optic, SMF, LC connector, optical monitoring capable, 8-pack		
E1MG-LX-OM-T	1000Base-LX SFP optic, SMF, LC connector, Optical Monitoring Capable, Industrial Temperature		
E1MG-SX-OM	1000Base-SX SFP optic, MMF, LC connector, Optical Monitoring Capable		
E1MG-SX-OM-8	1000BASE-SX SFP optic MMF, LC connector, optical monitoring capable, 8-pack		
E1MG-SX-OM-T	1000Base-SX SFP optic, MMF, LC connector, Optical Monitoring Capable, Industrial Temperature		
E1MG-TX	1000BASE-TX SFP Copper, RJ-45 Connector		
E1MG-LX-A	1000BASE-LX SFP Optic, SMF, LC connector, Optical Monitoring Capable, TAA compliant		
E1MG-LX-A8	1000BASE-LX SFP Optic, SMF, LC connector, Optical Monitoring Capable, TAA compliant, 8-pack		
E1MG-100FX-A	100BASE-FX SFP optic MMF, LC connector, optical monitoring capable, TAA compliant		
E1MG-100FX-A8	100BASE-FX SFP optic MMF, LC connector, optical monitoring capable, TAA compliant, 8-pack		
E1MG-SX-A	1000BASE-SX SFP Optic, MMF, (LC), Optical Monitoring Capable, TAA compliant		
E1MG-SX-A8	1000BASE-SX SFP Optic, MMF, (LC), Optical Monitoring Capable, TAA compliant, 8-pack		
E1MG-TX-A	1000BASE-TX SFP Copper, RJ-45, TAA compliant		
E1MG-TX-A8	1000BASE-TX SFP Copper, RJ-45, TAA compliant, 8-pack		
PC15USA	Power Cord, USA 125V 20A		
PCUSA	Power Cord EPS, USA, 250V 13A		
PCUSA-3M	Power Cord, USA version, NEMA 5-15P Plug (15amp), 3m		
PCUSA-C19C20	Power Cord for IEC 60320-C19 to IEC 60320-C20, 250V, 20A		
PCUSA-C19L620P	Power Cord for IEC 60320-C19 to locking Nema L6-20P, 250V, 20A		
PCUSA-C15	Power Cord High Temperature C15, USA, 125V 13A, 1.83m		

# Accessories for E-Rate



## ACCESSORIES (OPTICS, CABLES, CONNECTORS)

SKU/Part Number	Description	E-Rate Eligibility %	E-Rate Category
E100G-QSFP-ESR4	100GBASE-ESR4 QSFP+ optic (MTP 1x8 or 1x12), 300m over MMF, 1-pack	100%	Cat 2 (IC, MIBS)
E100G-QSFP-QSFP-AOC-1001	100GbE QSFP28 to QSFP28 Direct Attached, Active Optical Cable, 10m		
E100G-QSFP28-CWDM4-2KM	100GBASE-CWDM4 QSFP28 optic (LC), for distances up to 2 km over SMF		
E100G-QSFP28-LR4-10KM	100GBASE-LR4 QSFP28 optic (LC), for distances up to 10 km over SMF		
E100G-QSFP28-LR4-LP-10KM	100GBASE-LR4 Low Power, QSFP28 optic (LC), for distances up to 10 km over SMF		
E100G-QSFP28-LR4L-2KM	100 GbE QSFP28 optic (LC), LR4-Lite, for distances up to 2 km over SMF		
E100G-QSFP28-SR4	100GBASE-SR4 QSFP28 optic (MTP 1x12), for up to 100 m over MMF		
E40G-QSFP-ER4	40GBASE-ER4 QSFP+ optic (LC), for up to 40km over SMF		
E40G-QSFP-ESR4-8	40GBASE-ESR4 QSFP+ optic (MTP 1x8 or 1x12), 300m over MMF, 8-pack		
E40G-QSFP-LM4	40GBASE-LM4 QSFP+, 1310nm, 160m over duplex LC OM4 MMF		
E40G-QSFP-LR4	40GBASE-LR4 QSFP+ optic (LC), for up to 10km over SMF, 1-pack		
E40G-QSFP-LR4-8	40GBASE-LR4 QSFP+ optic (LC), for up to 10km over SMF 8-PACK		
E40G-QSFP-LR4-INT	40GBASE-LR4 QSFP+ to 4 SFP+ optic (LC), for up to 10 km over SMF		
E40G-QSFP-QSFP-AOC-1001	40GE Direct Attach QSFP+ to QSFP+ Active Optical Cable, 10m, 1-pack		
E40G-QSFP-SR4	40GBASE-SR4 QSFP+ optic (MTP 1x8 or 1x12), 100m over MMF, 1-pack		
E40G-QSFP-SR4-8	40GBASE-SR4 QSFP+ optic (MTP 1x8 or 1x12), 100m over MMF, 8-pack		
10G-SFPP-ER	10GBASE-ER SFP+ optic (LC), for up to 40km over SMF		
10G-SFPP-ER-2	10GBASE-ER SFP+ optic (LC), for up to 40km over SMF 2-pack		
10G-SFPP-LR-8	10GBASE-LR, SFPP SMF (LC), for up to 10km over SMF, 8-pack		
10G-SFPP-LRM-8	10GBASE-LRM SFP+ optic (LC), for up to 220m over MMF, 8-pack		
10G-SFPP-TWX-0308	10GbE Direct Attach SFP+ to SFP+ Active copper cable, 3 m, 8-pack		
10G-SFPP-TWX-0508	10GbE Direct Attach SFP+ to SFP+ Active copper cable, 5 m, 8-pack		
10G-SFPP-ZR	10GBASE-ZR SFP+ optic (LC), for up to 80km over SMF		
10G-SFPP-ZR-2	10GBASE-ZR SFP+ Optic (LC), for up to 80km over SMF, 2-pack		
10G-SFPP-TWX-P-0308	10GbE Direct Attach SFP+ to SFP+ Passive copper cable, 3 m, 8-pack		
10G-SFPP-TWX-P-0508	10GbE Direct Attach SFP+ to SFP+ Passive copper cable, 5 m, 8-pack		
10G-SFPP-SR-SA8	10GBASE-SR, SFP+ optic (LC), target range 300m over MMF, standard temperature (0°C to 70°C),TAA compliant, 8 pack		
10G-SFPP-SR-S8	10GBASE-SR,SFPP MMF LC CONNECTOR 8-PACK (No TAA)		
10G-SFPP-LR-SA	10GBASE-LR, SFP+ optic (LC), for up to 10km over SMF, standard temperature (0°C to 70°C), TAA compliant		
10G-SFPP-LR-SA8	10GBASE-LR, SFP+ optic (LC), for up to 10km over SMF, -standard temperature (0°C to 70°C), TAA compliant, - 8 pack		
10G-SFPP-LR-S8	10GBASE-LR,SFPP SMF LC CONNECTOR 8-PACK (No TAA)		

# Software, Licenses, and Services for E-Rate



SmartZone 100 & 144

## PHYSICAL SMARTZONE

SKU/Part Number	Description	E-Rate Eligibility %	E-Rate Category
LE9-0001-SG00	E-Rate AP management license for SZ-100/vSZ 3.X, 1 RUCKUS AP access point with 1 year E-Rate Warranty.	100%	Cat 2 (IC, MIBS)
LE9-0001-SG03	E-Rate AP management license for SZ-100/vSZ 3.X, 1 RUCKUS AP access point with 3 year E-Rate Warranty.		
LE9-0001-SG05	E-Rate AP management license for SZ-100/vSZ 3.X, 1 RUCKUS AP access point with 5 years E-Rate Warranty.		
PE1-S124-US01	E-Rate SmartZone 100 with 2x10GE ports and 4x1GE ports, 1 Y E-Rate Warranty E-Rate SZ100 2x10GE, 4x1GE 1 yr wrnty	100%	
PE1-S124-US03	E-Rate SmartZone 100 with 2x10GigE and 4 GigE ports with 3 years E-Rate Warranty. E-Rate SZ100 2x10GE, 4x1GE 3 yr wrnty	33%	
PE1-S144-US01	E-Rate SmartZone 144 - (4x) 1GbE & (4x) 10GbE ports, 1 Yr E-Rate Warranty	20%	
PE1-S144-US03	E-Rate SmartZone 144 - (4x) 1GbE & (4x) 10GbE ports, 3 Yr E-Rate Warranty		
PE1-S144-US05	E-Rate SmartZone 144 - (4x) 1GbE & (4x) 10GbE ports, 5 Yr E-Rate Warranty		



## VIRTUAL SMARTZONE

SKU/Part Number	Description	E-Rate Eligibility %	E-Rate Category
L09-0001-SG00	AP management license for SZ-100/vSZ 3.X/SCG200/SZ300, 1 RUCKUS AP Access point. Order this when you intend to run software version from 3.2 onwards.	100%	Cat 2 (IC, MIBS)
L09-VRND-WW00	Virtual Ruckus Network Director, 1 Instance (no device management licenses included)		
L09-0001-SGHA	AP management license for High Availability. Supported products (Standby mode only): SZ-300, vSZ-H. 1x Ruckus AP on Standby Cluster only		
L09-0001-ND00	Ruckus Device management license for virtual RND, 1 Ruckus Network Device		
LE9-VSCG-WW01	E-Rate Virtual SmartZone 3.0 or newer software virtual appliance, 1 Instance, includes 1 AP license with 1 year E-Rate Warranty.		
LE9-VSCG-WW03	E-Rate Virtual SmartZone 3.0 or newer software virtual appliance, 1 Instance, includes 1 AP license with 5 year E-Rate Warranty.		
LE9-VSCG-WW05	E-Rate Virtual SmartZone 3.0 or newer software virtual appliance, 1 Instance, includes 1 AP license with 5 year E-Rate Warranty.		
S01-URL1-1LSZ	SmartZone URL Filtering 1 year subscription for 1 AP		
S01-URL1-3LSZ	SmartZone URL Filtering 3 year subscription for 1 AP		
S01-URL1-5LSZ	SmartZone URL Filtering 5 year subscription for 1 AP		



SmartZone Data Plane

## SMARTZONE DATA PLANE AND VIRTUAL DATA PLANE

SKU/Part Number	Description	E-Rate Eligibility %	E-Rate Category
PE1-D144-US01	E-Rate SZ Dataplane 144 1 Yr E-Rate Warranty	100%	Cat 2 (BMIC)
PE1-D144-US03	E-Rate SZ Dataplane 144 3 Yr E-Rate Warranty	33%	Cat 2 (BMIC)
PE1-D144-US05	E-Rate SZ Dataplane 144 5 Yr E-Rate Warranty	20%	Cat 2 (BMIC)
S01-S144-1000	End User WatchDog Support for SmartZone 144 Controller Appliance, 1 Year	100%	Cat 2 (BMIC)
S01-S144-3000	End User WatchDog Support for SmartZone 144 Controller Appliance, 3 Year	33%	Cat 2 (BMIC)
S01-S144-5000	End User WatchDog Support for SmartZone 144 Controller Appliance, 5 Year	20%	Cat 2 (BMIC)
S01-D144-1000	WatchDog End User Support Smart Zone 144 Data Plane, 1Yr	100%	Cat 2 (BMIC)
S01-D144-3000	WatchDog End User Support Smart Zone 144 Data Plane, 3Yr	33%	Cat 2 (BMIC)
S01-D144-5000	WatchDog End User Support Smart Zone 144 Data Plane, 5Yr	20%	Cat 2 (BMIC)
L09-vSZD-WW00	Virtual Data Plane 3.2 or newer software virtual appliance, 1 instance (includes throughput upto 1 Gbps)	100%	Cat 2 (BMIC)
L09-vSZD-BW10	Virtual Data Plane Bandwidth Upgrade - 1 instance ADD ON (throughput upto 10 Gbps)		
L09-vSZD-BWUL	Virtual Data Plane Bandwidth Upgrade - 1 instance ADD ON (No throughput cap)		
L09-vSZD-SVCM	Virtual Data Plane – Services (CALEA Mirroring) – 1 instance ADD ON		
L09-vSZD-SVL3	Virtual Data Plane – Services (L3 Roaming) – ADD ON – Needs minimum 2 vDP/DP instances		
L09-vSZD-SNAT	Virtual Data Plane – Services (NAT) – 100K Sessions - 1 instance ADD ON		
L09-vSZD-SDHP	Virtual Data Plane – Services (DHCP Server) – 1K IP Leases - 1 instance ADD ON		

# Software, Licenses, and Services for E-Rate



ZoneDirector 1200

ZONEDIRECTOR			
SKU/Part Number	Description	E-Rate Eligibility %	E-Rate Category
9E1-1205-US01	E-Rate ZoneDirector 1200, licensed for up to 5 Access Points with 1 year E-Rate Warranty. ZD1200 can be upgraded to support up to 145 APs with AP license upgrades E-Rate ZD1205, mngs 5 APs 1yr wrnty	100%	Cat 2 (BMIC)
9E1-1205-US03	E-Rate ZoneDirector 1200, licensed for up to 5 Access Points with 3 years E-Rate Warranty. ZD1200 can be upgraded to support up to 145 APs with AP license upgrades E-Rate ZD1205, manags 5 APs 3yr wrnty		
9E1-1205-US05	E-Rate ZoneDirector 1200, licensed for up to 5 Access Points with 5 years E-Rate Warranty. ZD1200 can be upgraded to support up to 145 APs with AP license upgrades E-Rate ZD1205, manags 5 APs 5yr wrnty		
9E9-0001-ZD12	E-Rate ZoneDirector 1200 Single AP License Upgrade SKU with 1 year E-Rate Warranty. Max orderable upgrade license quantity is 145.		
9E9-3001-ZD12	E-Rate ZoneDirector 1200 Single AP License Upgrade SKU with 3 years E-Rate Warranty. Max orderable upgrade license quantity is 145.		
9E9-5001-ZD12	E-Rate ZoneDirector 1200 Single AP License Upgrade SKU with 5 years E-Rate Warranty. Max orderable upgrade license quantity is 145.		



RUCKUS ONE			
SKU/Part Number	Description	E-Rate Eligibility %	E-Rate Category
CLR-ESNT-APSW-REC1	RUCKUS One Essentials 1-Yr Subscription for 1 network device (AP or Switch) for REC - Renewal.*	100%	IC/MIBS
CLR-ESNT-APSW-REC3	RUCKUS One Essentials 3-Yr Subscription for 1 network device (AP or Switch) for REC - Renewal.*		
CLR-ESNT-APSW-REC5	RUCKUS One Essentials 5-Yr Subscription for 1 network device (AP or Switch) for REC - Renewal.*		
CLR-ESNT-APSW-REC1	RUCKUS CLD 1yr Subs for 1 ICX7150-C08P	100%	Cat 2 (MIBS)
CLR-ESNT-APSW-REC3	RUCKUS CLD 3yr Subs for 1 ICX7150-C08P		
CLR-ESNT-APSW-REC5	RUCKUS CLD 5yr Subs for 1 ICX7150-C08P		
CLR-ESNT-APSW-REC1	RUCKUS CLD 1yr Subs for 1 ICX7150 Switch		
CLR-ESNT-APSW-REC3	RUCKUS CLD 3yr Subs for 1 ICX7150 Switch		
CLR-ESNT-APSW-REC5	RUCKUS CLD 5yr Subs for 1 ICX7150 Switch		
CLR-ESNT-APSW-REC1	RUCKUS CLD 1yr Subs 1 ICX7550 Switch		
CLR-ESNT-APSW-REC3	RUCKUS CLD 3yr Subs 1 ICX7550 Switch		
CLR-ESNT-APSW-REC5	RUCKUS CLD 5yr Subs 1 ICX7550 Switch		
CLR-ESNT-APSW-REC1	RUCKUS CLD 1yr Subs for 1 ICX7650 Switch		
CLR-ESNT-APSW-REC3	RUCKUS CLD 3yr Subs for 1 ICX7650 Switch		

\* Switch RMT support is not included and is required to be purchased separately.

# Software, Licenses, and Services for E-Rate



RUCKUS ONE			
SKU/Part Number	Description	E-Rate Eligibility %	E-Rate Category
CLR-ESNT-APSW-REC5	RUCKUS CLD 5yr Subs for 1 ICX7650 Switch	100%	Cat 2 (MIBS)
CLR-ESNT-APSW-REC1	RUCKUS CLD 1yr Subs for 1 ICX7850 Switch		
CLR-ESNT-APSW-REC3	RUCKUS CLD 3yr Subs for 1 ICX7850 Switch		
CLR-ESNT-APSW-REC5	RUCKUS CLD 5yr Subs for 1 ICX7850 Switch		
CLR-ESNT-APSW-EDU3	RUCKUS One Essentials 3-Yr Subscription for 1 network device (AP or Switch) for EDU - Renewal.*	100%	IC/MIBS
CLR-ESNT-APSW-EDU5	RUCKUS One Essentials 5-Yr Subscription for 1 network device (AP or Switch) for EDU - Renewal.*		
CLR-ESNT-APSW-EDU5	RUCKUS Cloud Wi-Fi SLED 5yr Subscription for 1xICX7150-C08P Switch	100%	Cat 2 (MIBS)
CLR-ESNT-APSW-EDU5	RUCKUS Cloud Wi-Fi SLED 5yr Subscription for 1xICX7150 Switch		
CLR-ESNT-APSW-EDU5	RUCKUS Cloud Wi-Fi SLED 5yr Subscription for 1xICX7550 Switch		
CLR-ESNT-APSW-EDU5	RUCKUS Cloud Wi-Fi SLED 5yr Subscription for 1xICX7650 Switch		
CLR-ESNT-APSW-EDU5	RUCKUS Cloud Wi-Fi SLED 5yr Subscription for 1xICX7850 Switch		
CLR-PROF-APSW-MSP1	RUCKUS Cloud MSP Wi-Fi 1 year subscription for 1 AP		
CLR-PROF-APSW-MSP3	RUCKUS Cloud MSP Wi-Fi 3 year subscription for 1 AP		
CLR-PROF-APSW-MSP5	RUCKUS Cloud MSP Wi-Fi 5 year subscription for 1 AP		
CLR-PROF-APSW-MSP1	RUCKUS CLD 1 yr MSP Subs for 1 ICX7150-C08P		
CLR-PROF-APSW-MSP3	RUCKUS CLD 3 yr MSP Subs for 1 ICX7150-C08P		
CLR-PROF-APSW-MSP5	RUCKUS CLD 5 yr MSP Subs for 1 ICX7150-C08P		
CLR-PROF-APSW-MSP1	RUCKUS CLD 1 yr MSP Subs for 1 ICX7150 Sw		
CLR-PROF-APSW-MSP3	RUCKUS CLD 3 yr MSP Subs for 1 ICX7150 Sw		
CLR-PROF-APSW-MSP5	RUCKUS CLD 5 yr MSP Subs for 1 ICX7150 Sw		
CLR-PROF-APSW-MSP1	RUCKUS CLD 1yr MSP Subs for 1 ICX7550 Sw		
CLR-PROF-APSW-MSP3	RUCKUS CLD 3yr MSP Subs for 1 ICX7550 Sw		
CLR-PROF-APSW-MSP5	RUCKUS CLD 5yr MSP Subs for 1 ICX7550 Sw		
CLR-PROF-APSW-MSP1	RUCKUS CLD 1 yr MSP Subs for 1 ICX7650 Sw		
CLR-PROF-APSW-MSP3	RUCKUS CLD 3 yr MSP Subs for 1 ICX7650 Sw		
CLR-PROF-APSW-MSP5	RUCKUS CLD 5 yr MSP Subs for 1 ICX7650 Sw		
CLR-PROF-APSW-MSP1	RUCKUS CLD 1 yr MSP Subs for 1 ICX7850 Sw		
CLR-PROF-APSW-MSP3	RUCKUS CLD 3 yr MSP Subs for 1 ICX7850 Sw		
CLR-PROF-APSW-MSP5	RUCKUS CLD 5 yr MSP Subs for 1 ICX7850 Sw		

\* Switch RMT support is not included and is required to be purchased separately.

# Software, Licenses, and Services for E-Rate



RUCKUS ONE BUNDLE			
SKU/Part Number	Description	E-Rate Eligibility %	E-Rate Category
CLR-PROF-APSW-REC1	RUCKUS One Professional 1-Yr Subscription for 1 network device (AP or Switch) for REC - Renewal.	90% / 100%	IC/MIBS
CLR-PROF-APSW-REC3	RUCKUS One Professional 3-Yr Subscription for 1 network device (AP or Switch) for REC - Renewal.		
CLR-PROF-APSW-MSP1	RUCKUS One Professional 1-Yr Subscription for 1 network device (AP or Switch) for MSP - Renewal.		
CLR-PROF-APSW-MSP3	RUCKUS One Professional 3-Yr Subscription for 1 network device (AP or Switch) for MSP - Renewal.		

\* Switch RMT support is not included and is required to be purchased separately.

SWITCH MANAGEMENT BUNDLE			
SKU/Part Number	Description	E-Rate Eligibility %	E-Rate Category
LE9-712P-SGX3	SZ ICX Mgt Lic RMT Spp 712P 3yr ERATE	100%	Cat 2 (IC, MIBS)
LE9-712P-SGX5	SZ ICX Mgt Lic RMT Spp 712P 5yr ERATE		
LE9-7150-SGX3	SZ ICX Mgt Lic RMT Spp 7150 3yr ERATE		
LE9-7150-SGX5	SZ ICX Mgt Lic RMT Spp 7150 5yr ERATE		
LE9-7450-SGX3	SZ ICX Mgt Lic RMT Spp 7450 3yr ERATE		
LE9-7450-SGX5	SZ ICX Mgt Lic RMT Spp 7450 5yr ERATE		
LE9-7550-SGX3	SZ ICX Mgt Lic RMT Spp 7550 3yr ERATE		
LE9-7550-SGX5	SZ ICX Mgt Lic RMT Spp 7550 5yr ERATE		
LE9-75ZF-SGX3	SZ ICX Mgt Lic RMT Spp 75ZF 3yr ERATE		
LE9-75ZF-SGX5	SZ ICX Mgt Lic RMT Spp 75ZF 5yr ERATE		
LE9-7650-SGX3	SZ ICX Mgt Lic RMT Spp 7650 3yr ERATE		
LE9-7650-SGX5	SZ ICX Mgt Lic RMT Spp 7650 5yr ERATE		
LE9-7750-SGX3	SZ ICX Mgt Lic RMT Spp 7750 3yr ERATE		
LE9-7750-SGX5	SZ ICX Mgt Lic RMT Spp 7750 5yr ERATE		
LE9-7850-SGX3	SZ ICX Mgt Lic RMT Spp 7850 3yr ERATE		
LE9-7850-SGX5	SZ ICX Mgt Lic RMT Spp 7850 5yr ERATE		

# Software, Licenses, and Services for E-Rate

CLOUD SUBSCRIPTIONS FOR EDUCATION			
SKU/Part Number	Description	E-Rate Eligibility %	E-Rate Category
CLD-BNDL-S82C-EDU5	CLD Bundle includes Ruckus Cloud Subscription 5-yr for ICX 8200C Switch and 5-yr Switch Support EDU	100%	Cat 2 (IC, MIBS)
CLD-BNDL-S82X-EDU5	CLD Bundle includes Ruckus Cloud Subscription 5-yr for ICX 8200 Switch and 5-yr Switch Support EDU		
CLD-BNDL-S82Z-EDU5	CLD Bundle includes Ruckus Cloud Subscription 5-yr for ICX 8200Z Switch and 5-yr Switch Support EDU		
CLD-BNDL-SZWA-EDU5	E-RATE SZ AP Mgmt License for SZ144/vSZ, includes 5yr Warranty for 1xAP, includes basic RUCKUS Analytics Subscription 5yr.		
CLD-BNDL-RCAW-EDU5	E-RATE RUCKUS Cloud with basic RUCKUS Analytics Subscriptions for 1xAP 5yr. Includes Warranty Support.		
CLD-S08E-5001	RUCKUS Cloud Wi-Fi SLED 5yr Subscription for 1xICX7150-C08P Switch		
CLD-S71E-5001	RUCKUS Cloud Wi-Fi SLED 5yr Subscription for 1xICX7150 Switch		
CLD-S75E-5001	RUCKUS Cloud Wi-Fi SLED 5yr Subscription for 1xICX7550 Switch		
CLD-S76E-5001	RUCKUS Cloud Wi-Fi SLED 5yr Subscription for 1xICX7650 Switch		
CLD-S78E-5001	RUCKUS Cloud Wi-Fi SLED 5yr Subscription for 1xICX7850 Switch		

SUBSCRIPTION BUNDLES OF RUCKUS ANALYTICS AND SMARTZONE			
SKU/Part Number	Description	E-Rate Eligibility %	E-Rate Category
CLD-BNDL-SZWA-REC1	SZ AP Mgmt License for SZ144/vSZ, includes Support for AP 1yr, includes RUCKUS Analytics Subscription 1yr.	100%	Cat 2 (IC, MIBS)
CLD-BNDL-SZWA-REC3	SZ AP Mgmt License for SZ144/vSZ, includes Support for AP 3yr, includes RUCKUS Analytics Subscription 3yr.	33%	
CLD-BNDL-SZWA-REC5	SZ AP Mgmt License for SZ144/vSZ, includes Support for AP 5yr, includes RUCKUS Analytics Subscription 5yr.	20%	
CLD-BNDL-SZWA-BDG1	SZ AP Mgmt License for SZ144/vSZ, includes Partner Bulldog Support for AP 1yr, includes RUCKUS Analytics Subscription 1yr.	100%	
CLD-BNDL-SZWA-BDG3	SZ AP Mgmt License for SZ144/vSZ, includes Partner Bulldog Support for AP 3yr, includes RUCKUS Analytics Subscription 3yr.	33%	
CLD-BNDL-SZWA-BDG5	SZ AP Mgmt License for SZ144/vSZ, includes Partner Bulldog Support for AP 5yr, includes RUCKUS Analytics Subscription 5yr.	20%	
CLD-BNDL-SZSA- EDU3	E-RATE SmartZone RA support bundle for SZ144/vSZ, includes 5yr Warranty for 1xAP, includes basic RUCKUS Analytics Subscription 5yr.	25%	
CLD-BNDL-SZSA-EDU5	E-RATE SmartZone RA support bundle for SZ144/vSZ, includes 5yr Warranty for 1xAP, includes basic RUCKUS Analytics Subscription 5yr..	25%	





RUCKUS Analytics

## RUCKUS ANALYTICS

SKU/Part Number	Description	E-Rate Eligibility %	E-Rate Category
CLD-ANAP-1001	RUCKUS Analytics 1 year subscription for 1 Cloud or SZ managed AP or ICX switch	100%	Cat 2 (MIBS)
CLD-ANAP-3001	RUCKUS Analytics 3 year subscription for 1 Cloud or SZ managed AP or ICX switch	33%	
CLD-ANAP-5001	RUCKUS Analytics 5 year subscription for 1 Cloud or SZ managed AP or ICX switch	20%	

## WATCHDOG REMOTE SUPPORT FOR ICX

SKU/Part Number	Description	E-Rate Eligibility %	E-Rate Category
ICX7150-SVL-RMT-1	WatchDog REMOTE SUPPORT, ICX7150-24, 24P ,48, 48P, 48PF, C12P, C10ZP & -24F	100%	Cat 2 (BMIC/ MIBS)
ICX7150-SVL-RMT-3	WatchDog REMOTE SUPPORT, ICX7150-24, 24P ,48, 48P, 48PF, C12P, C10ZP & -24F	33%	Cat 2 (BMIC/ MIBS)
ICX7150-SVL-RMT-5	WatchDog REMOTE SUPPORT, ICX7150-24, 24P ,48, 48P, 48PF, C12P, C10ZP & -24F	20%	Cat 2 (BMIC/ MIBS)
ICX7150-C08P-SVL-RMT-1	Watchdog Remote Support, ICX7150-C08P SKUs Only; 1Yr duration	100%	Cat 2 (BMIC/ MIBS)
ICX7150-C08P-SVL-RMT-3	Watchdog Remote Support, ICX7150-C08P SKUs Only; 3Yr duration	33%	Cat 2 (BMIC/ MIBS)
ICX7150-C08P-SVL-RMT-5	Watchdog Remote Support, ICX7150-C08P SKUs Only; 5Yr duration	20%	Cat 2 (BMIC/ MIBS)
ICX7150-48ZP-SVL-RMT-1	WatchDog REMOTE SUPPORT, ICX 7150-48ZP SKUs only	100%	Cat 2 (BMIC/ MIBS)
ICX7150-48ZP-SVL-RMT-3	WatchDog REMOTE SUPPORT, ICX 7150-48ZP SKUs only	33%	Cat 2 (BMIC/ MIBS)
ICX7150-48ZP-SVL-RMT-5	WatchDog REMOTE SUPPORT, ICX 7150-48ZP SKUs only	20%	Cat 2 (BMIC/ MIBS)
ICX7650-SVL-RMT-1	WatchDog REMOTE SUPPORT, ICX 7650	100%	Cat 2 (BMIC/ MIBS)
ICX7650-SVL-RMT-3	WatchDog REMOTE SUPPORT, ICX 7650	33%	Cat 2 (BMIC/ MIBS)
ICX7650-SVL-RMT-5	WatchDog REMOTE SUPPORT, ICX 7650	20%	Cat 2 (BMIC/ MIBS)
ICX7850-SVL-RMT-1	WatchDog REMOTE SUPPORT, ICX 7850, 1 YR	100%	Cat 2 (BMIC/ MIBS)
ICX7850-SVL-RMT-3	WatchDog REMOTE SUPPORT, ICX 7850, 3 YR	33%	Cat 2 (BMIC/ MIBS)
ICX7850-SVL-RMT-5	WatchDog REMOTE SUPPORT, ICX 7850, 5 YR	20%	Cat 2 (BMIC/ MIBS)

## WATCHDOG REMOTE SUPPORT FOR ICX

SKU/Part Number	Description	E-Rate Eligibility %	E-Rate Category
ICX7550-S-RMT-1	Watchdog Remote Support, ICX7550-24,-48; -24P; -48P SKUs Only; 1 Yr duration	100%	Cat 2 (BMIC/ MIBS)
ICX7550-S-RMT-3	Watchdog Remote Support, ICX7550-24,-48; -24P; -48P SKUs Only; 3 Yr duration	33%	Cat 2 (BMIC/ MIBS)
ICX7550-S-RMT-5	Watchdog Remote Support, ICX7550-24,-48; -24P; -48P SKUs Only; 5 Yr duration	20%	Cat 2 (BMIC/ MIBS)

## WATCHDOG SUPPORT FOR SMARTZONE

SKU/Part Number	Description	E-Rate Eligibility %	E-Rate Category
S41-S144-10ER	E-Rate K-12 Education WatchDog Support for SZ 144, 1 Yr	100%	Cat 2 (BMIC/ MIBS)
S41-S144-30ER	E-Rate K-12 Education WatchDog Support for SZ 144, 3 Yr	33%	
S41-S144-50ER	E-Rate K-12 Education WatchDog Support for SZ 144, 5 Yr	20%	
S41-D144-10ER	E-Rate K-12 Education WatchDog Support for SZD 144, 1 Yr	100%	
S41-D144-30ER	E-Rate K-12 Education WatchDog Support for SZD 144, 3 Yr	33%	
S41-D144-50ER	E-Rate K-12 Education WatchDog Support for SZD 144, 5 Yr	20%	

## WATCHDOG SUPPORT FOR UNLEASHED ACCESS POINTS

SKU/Part Number	Description	E-Rate Eligibility %	E-Rate Category
841-ULAP-1UER	E-Rate support for Unleashed APs, no Adv HW replacement, 1 Yr	100%	Cat 2 (BMIC)
841-ULAP-3UER	E-Rate support for Unleashed APs, no Adv HW replacement, 3 Yr	33%	
841-ULAP-5UER	E-Rate support for Unleashed APs, no Adv HW replacement, 5 Yr	20%	

## EDUCATION WATCHDOG SUPPORT FOR ZONEDIRECTOR 1205

SKU/Part Number	Description	E-Rate Eligibility %	E-Rate Category
841-1205-10ER	E-Rate K-12 Education WatchDog Support for ZoneDirector 1205, 1 Year	100%	Cat 2 (BMIC)
841-1205-30ER	E-Rate K-12 Education WatchDog Support for ZoneDirector 1205, 3 Year	33%	
841-1205-50ER	E-Rate K-12 Education WatchDog Support for ZoneDirector 1205, 5 Year	20%	
841-1201-1LER	E-Rate K-12 Education WatchDog Support for ZoneDirector AP management license, 1 Year	100%	
841-1201-3LER	E-Rate K-12 Education WatchDog Support for ZoneDirector AP management license, 3 Year	33%	
841-1201-5LER	E-Rate K-12 Education WatchDog Support for ZoneDirector AP management license, 5 Year	20%	
S41-0001-1LER	E-Rate K-12 WatchDog Support for SZ/vSZ AP management license, 1 Yr	100%	
S41-0001-3LER	E-Rate K-12 WatchDog Support for SZ/vSZ AP management license, 3 Yr	33%	
S41-0001-5LER	E-Rate K-12 WatchDog Support for SZ/vSZ AP management license, 5 Yr	20%	

## About RUCKUS Networks

RUCKUS Networks builds and delivers purpose-driven networks that perform in the demanding environments of the industries we serve. Together with our network of trusted go-to-market partners, we empower our customers to deliver exceptional experiences to the guests, students, residents, citizens and employees who count on them.

[www.ruckusnetworks.com](http://www.ruckusnetworks.com)

Visit our website or contact your local RUCKUS representative for more information.

© 2024 CommScope, LLC. All rights reserved.

All rights reserved. CommScope and the CommScope logo are registered trademarks of CommScope and/or its affiliates in the U.S. and other countries. For additional trademark information see <https://www.commscope.com/trademarks>. All product names, trademarks and registered trademarks are property of their respective owners.

CO-115185.5-EN (04/24)

**RUCKUS**<sup>®</sup>  
COMMSCOPE